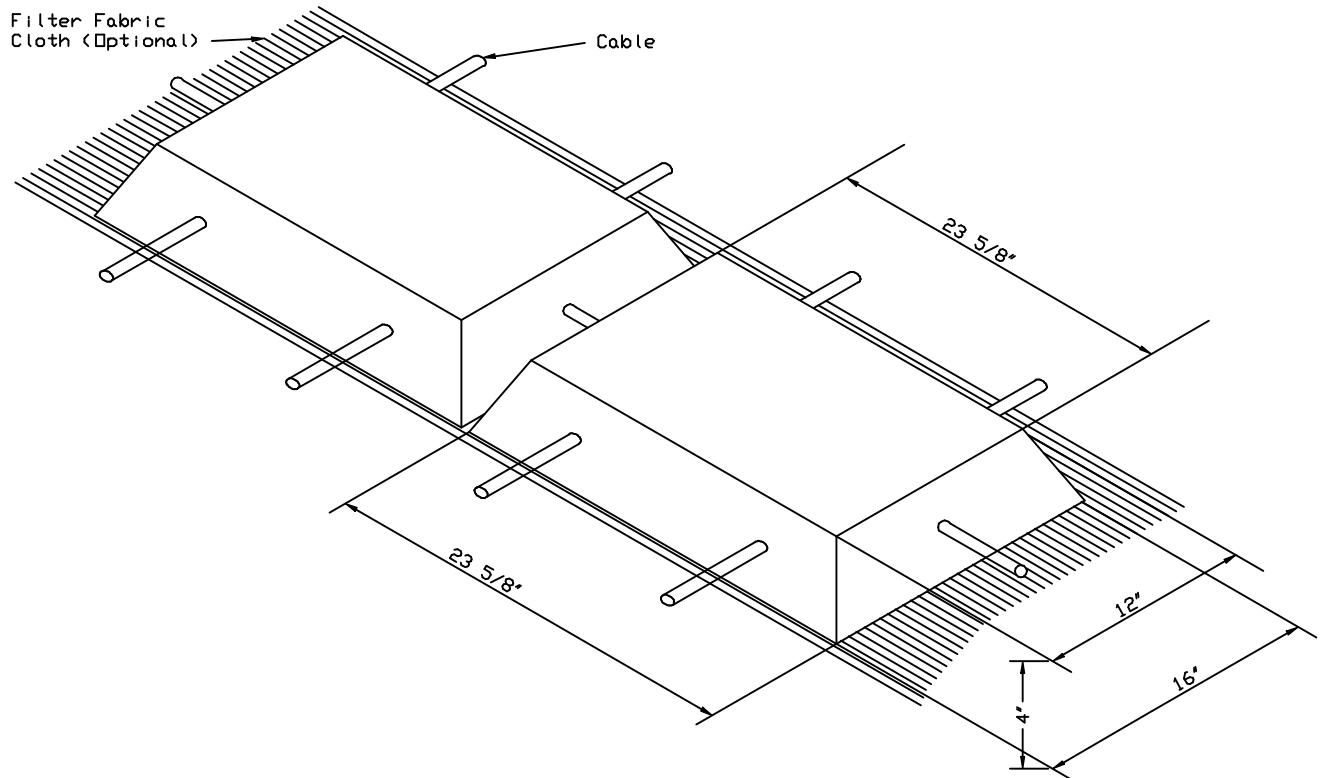


# SCIOTO VALLEY PRECAST COMPANY

3218 S. BRIDGE STREET

CHILlicoTHE, OHIO 45601

PHONE (740) 663-2659



Size Of Mat: 4' x 16' = 64 Sq. Ft.

Weight Per Mat: Approx. 2000 Lbs.

24 Blocks Per Mat

Block Approx. 31 Lbs. Per Sq. Ft.

Stainless Steel Or Galvanized Cables Used

Easy To Install Above Or Below Water Level

Integrated Cable In Concrete Mat Allows For Easy Interlocking Of Multiple Mats

Mats Can Be Easily Cut To Fit Smaller Areas, Irregular Shapes Or Allow For Drainage Pipe

Due To Its Integrated Cable Design, The Concrete Mat Will Easily Conform To Any Surface Changes Caused By Freeze-Thaw, Etc.

Site Preparation Is Minimal As This System Can Be Installed On Existing Subgrade Material Following Minimal Grade Preparation.

The Integrated Cable Allows External Forces To Be Distributed Throughout The System. Maintenance Vehicles Can Easily Maneuver Over This Type Of System.

Vehicle Crossings Of Creek And River Beds Are Easily Constructed.

The Precast Concrete Mat Is One Of The Most Up To Date Forms Of Erosion Control Available To Take The Place Of Rip-Rap.

This System Of Integrated Strong Galvanized Or Stainless Cable Into High Strength Concrete Permit Durability And Flexibility.

EROSION CONTROL MAT ISOMETRIC