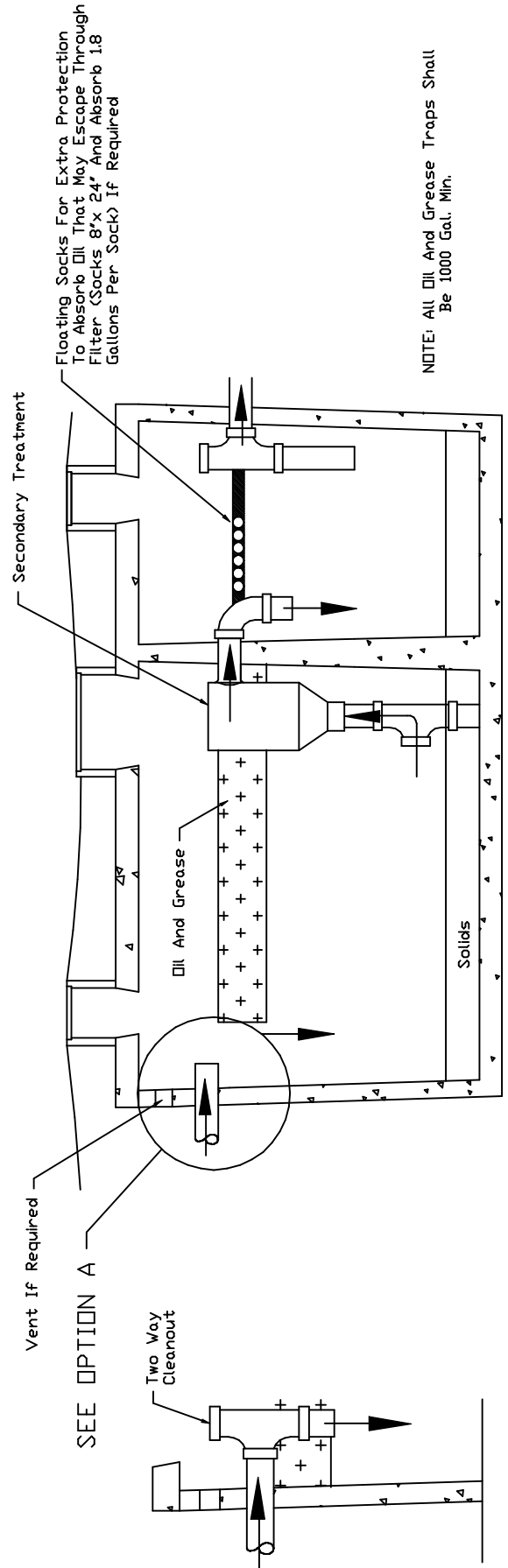
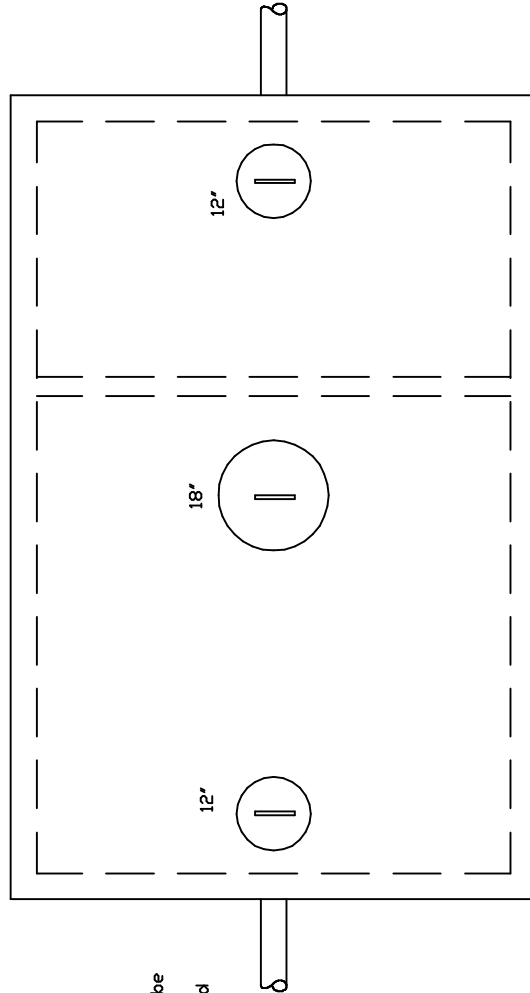


*Standard Oil And Grease Interceptor  
With Secondary Treatment  
Oil Treatment Following Secondary Treatment*

- 1500 Gal. Two-Compartment
- 2000 Gal. Two-Compartment
- 3000 Gal. Two-Compartment
- 4000 Gal. Two-Compartment

**NOTE:**

- 1) All inlet and outlet seals must be oil and grease resistant.
- 2) All joint sealant must be oil and grease resistant.



NOTE: All Oil And Grease Traps Shall Be 1000 Gal. Min.

SEE OPTION A

OPTION A

STANDARD TWO COMPARTMENT OIL AND GREASE INTERCEPTOR WITH FLOATING SOCKS